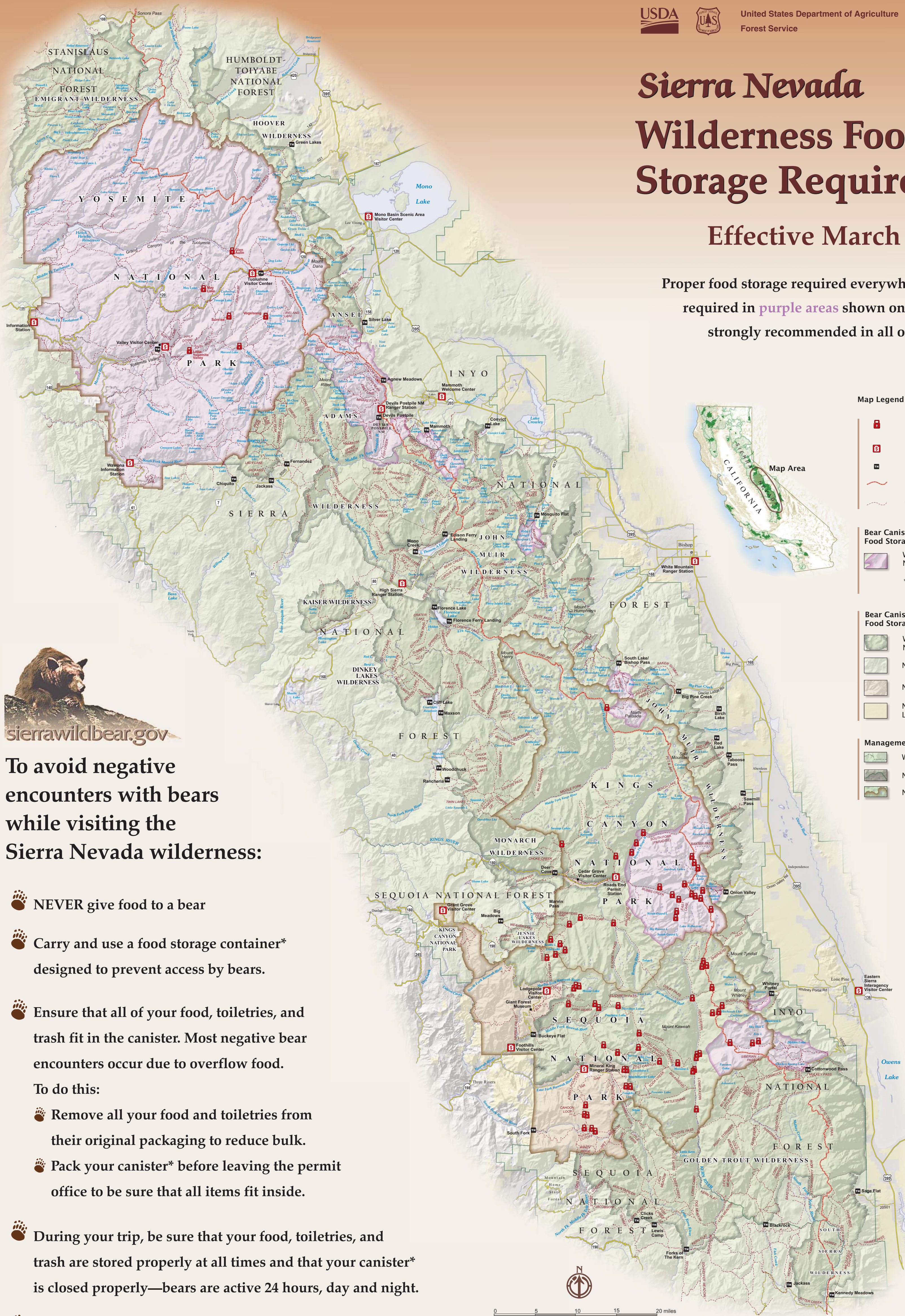




Sierra Nevada Wilderness Food Storage Requirements

Effective March 2008

Proper food storage required everywhere. Canisters are required in purple areas shown on this map, and strongly recommended in all other areas.



Map Legend

- Food Storage Locker (Bear Box)
- Forest Service / Park Service Bear Canister Rental Location
- Developed Trailhead
- Pacific Crest National Scenic Trail
- Trail

Bear Canister/Stock Panniers/ Food Storage Lockers REQUIRED

- Wilderness: National Forest or National Park shown in purple*
**also includes non-wilderness areas of Yosemite National Park*

Bear Canister/Stock Panniers/ Food Storage Locker RECOMMENDED

- Wilderness: National Forest or National Park
- Non-wilderness: National Forest
- Non-wilderness: National Park
- Non-wilderness: Bureau of Land Management

Management Boundaries

- Wilderness Boundary
- National Forest Boundary
- National Park Boundary



To avoid negative encounters with bears while visiting the Sierra Nevada wilderness:

- NEVER give food to a bear
- Carry and use a food storage container* designed to prevent access by bears.
- Ensure that all of your food, toiletries, and trash fit in the canister. Most negative bear encounters occur due to overflow food.
To do this:
 - Remove all your food and toiletries from their original packaging to reduce bulk.
 - Pack your canister* before leaving the permit office to be sure that all items fit inside.
- During your trip, be sure that your food, toiletries, and trash are stored properly at all times and that your canister* is closed properly—bears are active 24 hours, day and night.
- If you do see a bear, do not approach it.

* For stock users, this refers to a bear-resistant pannier.

While not everyone will encounter bears in the wild, everyone has an opportunity to save bears by keeping them wild.



This map was designed and produced by USDA Forest Service Pacific Southwest Region Geospatial Services, in partnership with the National Park Service, August 2009. All previous Wilderness Food Storage Requirement Map versions are obsolete.

This map is designed to assist wilderness users in planning their food storage strategies. It is not designed, nor should it be used for road or trail navigation.

The USDA Forest Service is an equal opportunity service provider and employer.